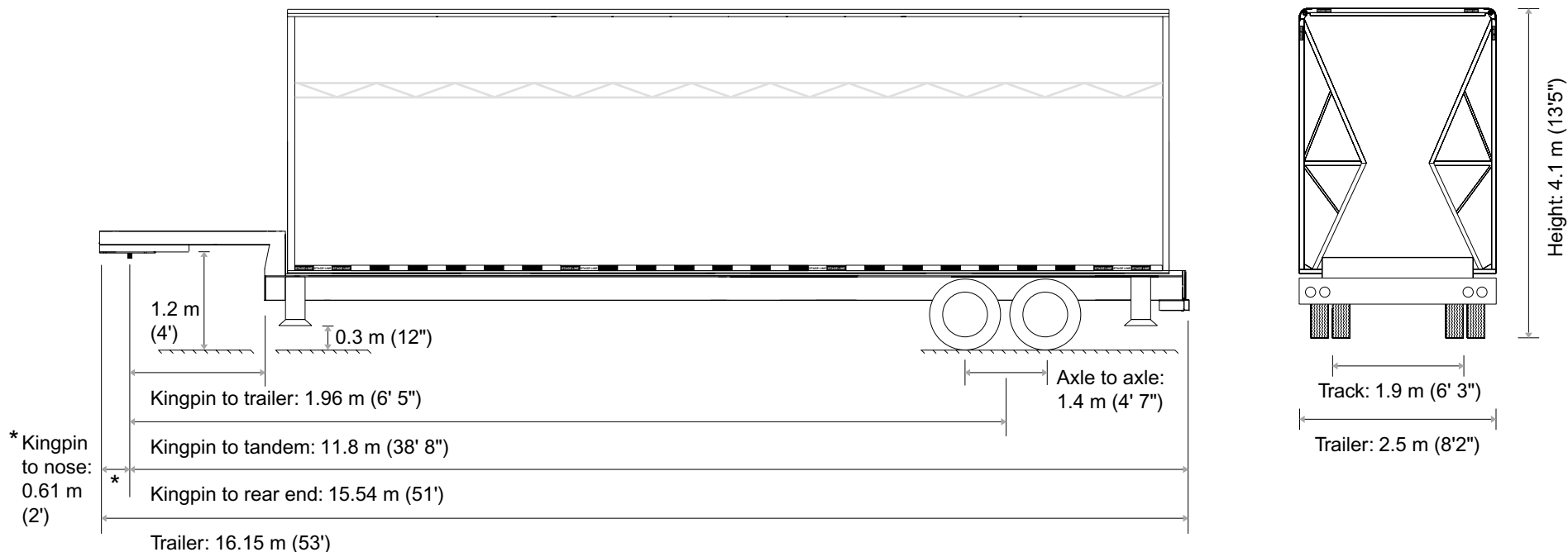




700 Marsolais Street
 L'Assomption, Quebec
 Canada J5W 2G9
 Tel: (450) 589-1063
 or 1-800-267-8243
 Fax: (450) 589-1711
 www.stageline.com
 info@stageline.com

Mass and Dimensions - SL 320



Mass	Kg	Lbs
Total mass	19000	42000
Mass on tandem	15400	34000
Allowable load on axle	9000	19800

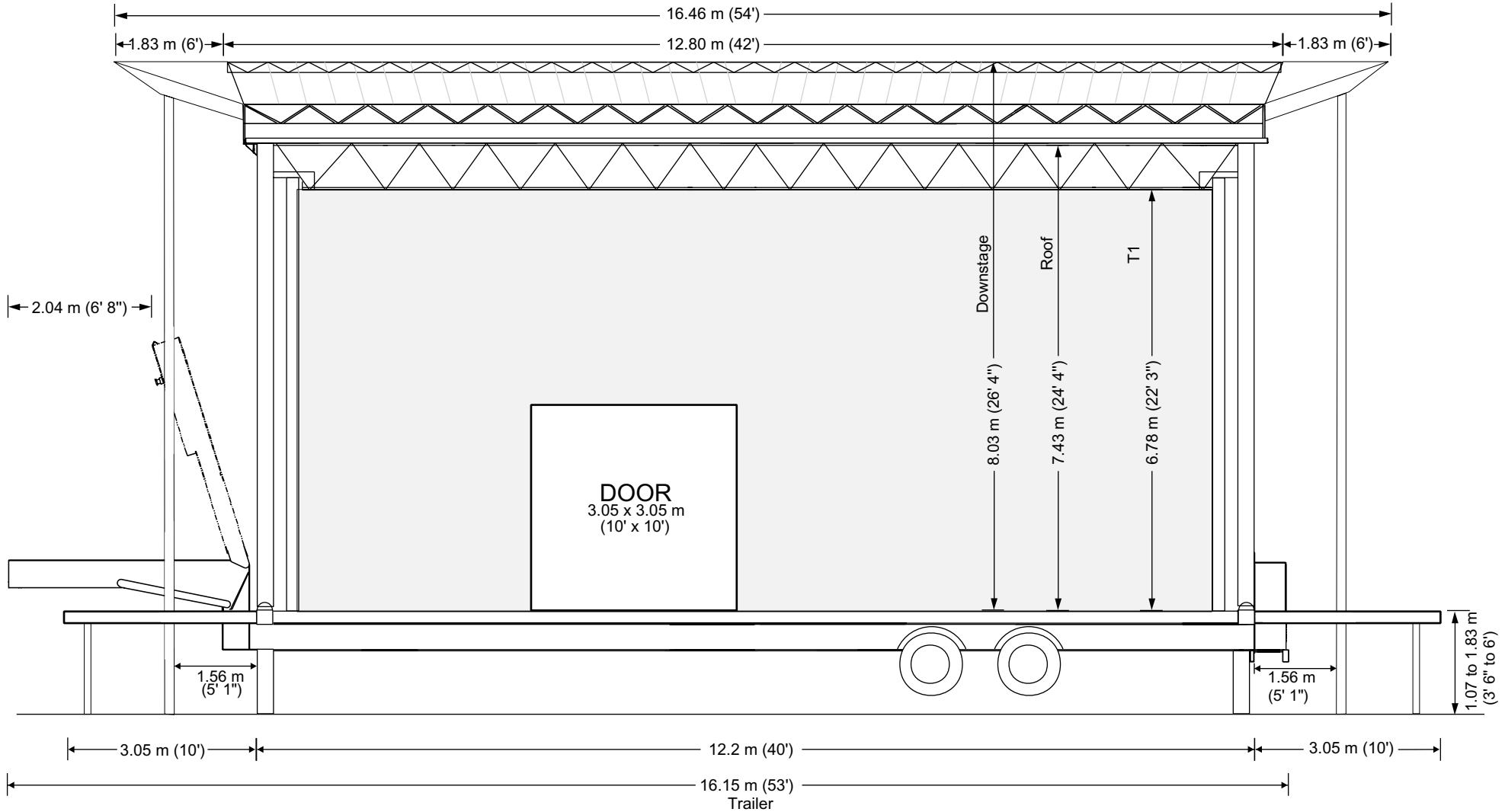
Standard: 2 axles

1. Mass may vary depending on options.
2. Technical specifications may change without notice.
3. Drawings are not to scale.



700 Marsolais Street
 L'Assomption, Quebec
 Canada J5W 2G9
 Tel: (450) 589-1063
 or 1-800-267-8243
 Fax: (450) 589-1711
 www.stageline.com
 info@stageline.com

Stageline SL 320



FRONT VIEW / WINDWALL

Stage specifications subject to change without notice
 Figures are within inch or cm to actual size

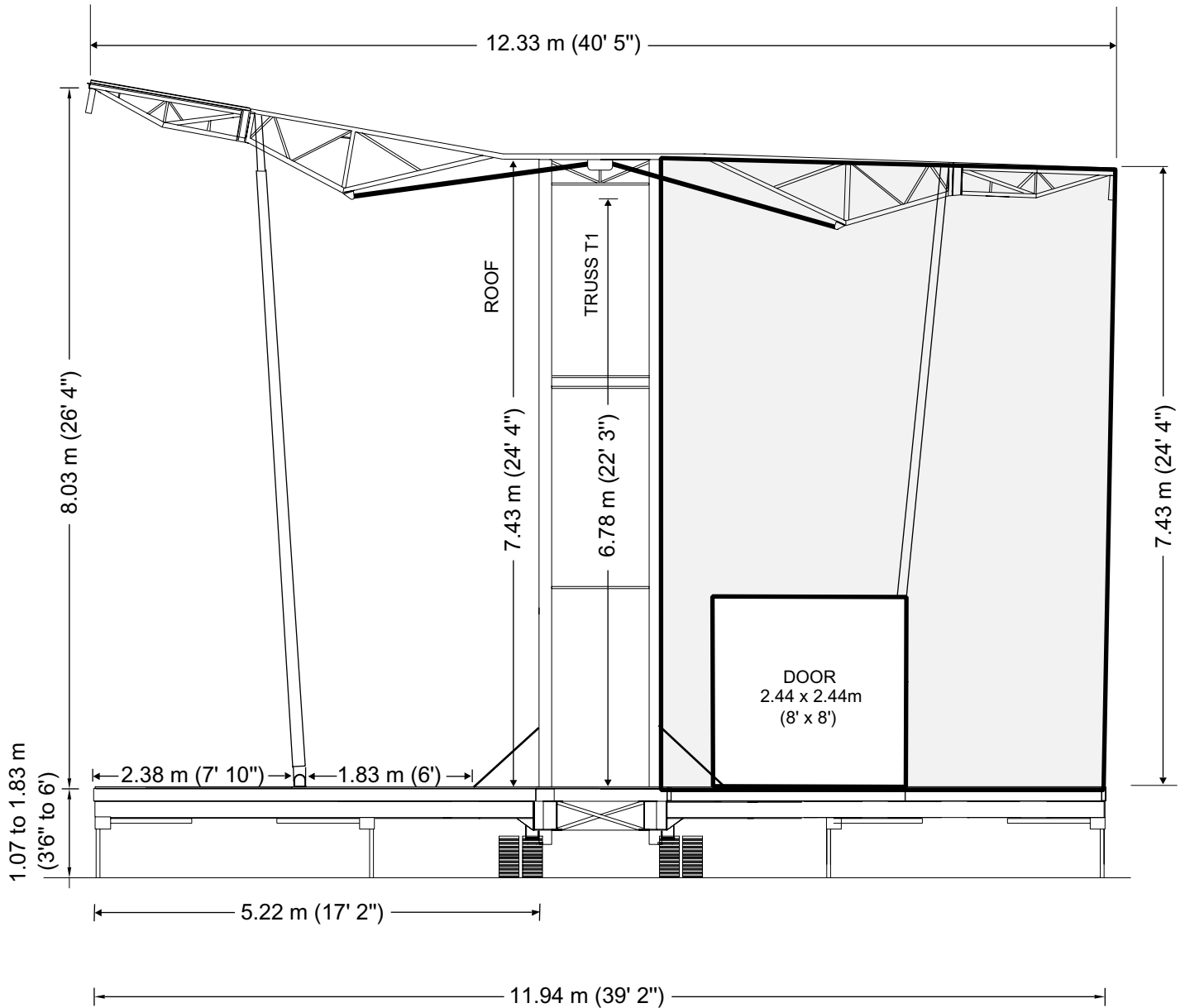
©1999 – All rights reserved Stageline® Mobile Stage Inc. Any and all forms of adaptation or reproduction of this document including plans and drawings found herein, in whole or in part, is strictly forbidden without the written authorisation of Stageline® Mobile Stage Inc.

Date: 02-07-31
 Ref no.: D09-V-322-A
 Revision 6



700 Marsolais Street
L'Assomption, Québec
Canada J5W 2G9
Tel: (450) 589-1063
or 1-800-267-8243
Fax: (450) 589-1711
www.stageline.com
info@stageline.com

Stageline SL 320



SIDE VIEW

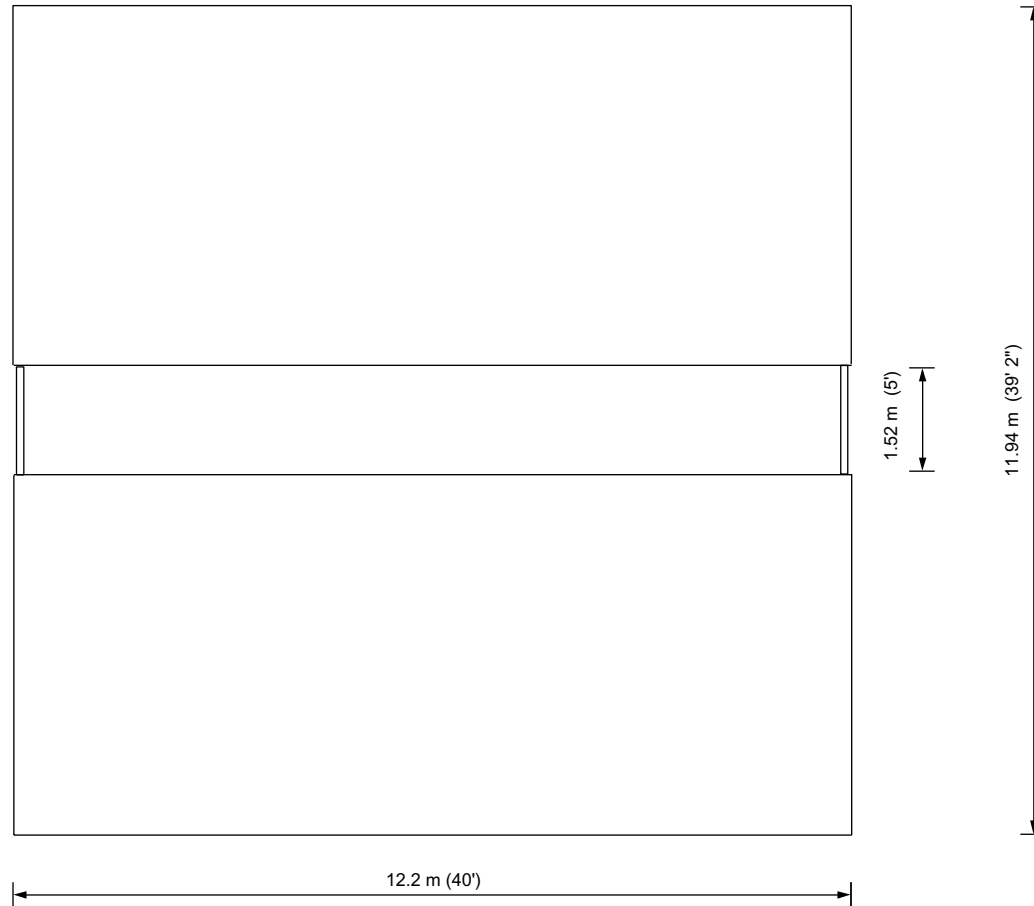
Stage specifications subject to change without notice. Figures are within inch or cm to actual size.

Date: 02-07-31
Ref no.: D09-V-321-A
Revision 4



700 Marsolais Street
L'Assomption, Québec
Canada J5W 2G9
Tel: (450) 589-1063
or 1-800-267-8243
Fax: (450) 589-1711
www.stageline.com
info@stageline.com

Stageline SL 320



DOWN STAGE
CAPACITY: 100lb/ft² (490 kg/m²)

FLOOR VIEW

Stage specifications subject
to change without notice
Figures are within inch
or cm to actual size

©1999 – All rights reserved Stageline® Mobile Stage Inc. Any and all forms of adaptation or reproduction of this document including plans and drawings found herein, in whole or in part, is strictly forbidden without the written authorisation of Stageline® Mobile Stage Inc.

Date: 02-07-31
Rev no.: D09-V-323-A
Revision 4

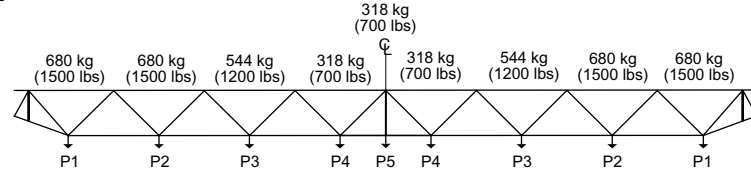


700 Marsolais Street
L'Assomption, Quebec
Canada J5W 2G9
Tel: (450) 589-1063
or 1-800-267-8243
Fax: (450) 589-1711
www.stageline.com
info@stageline.com

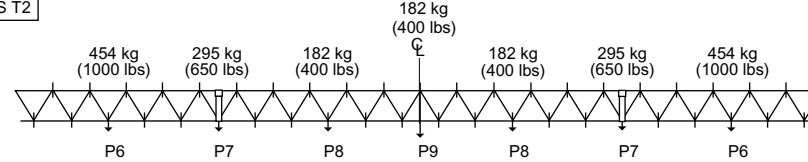
Stageline SL 320 - Rigging Plan

LOAD BEARING TRUSSES

TRUSS T1



TRUSS T2



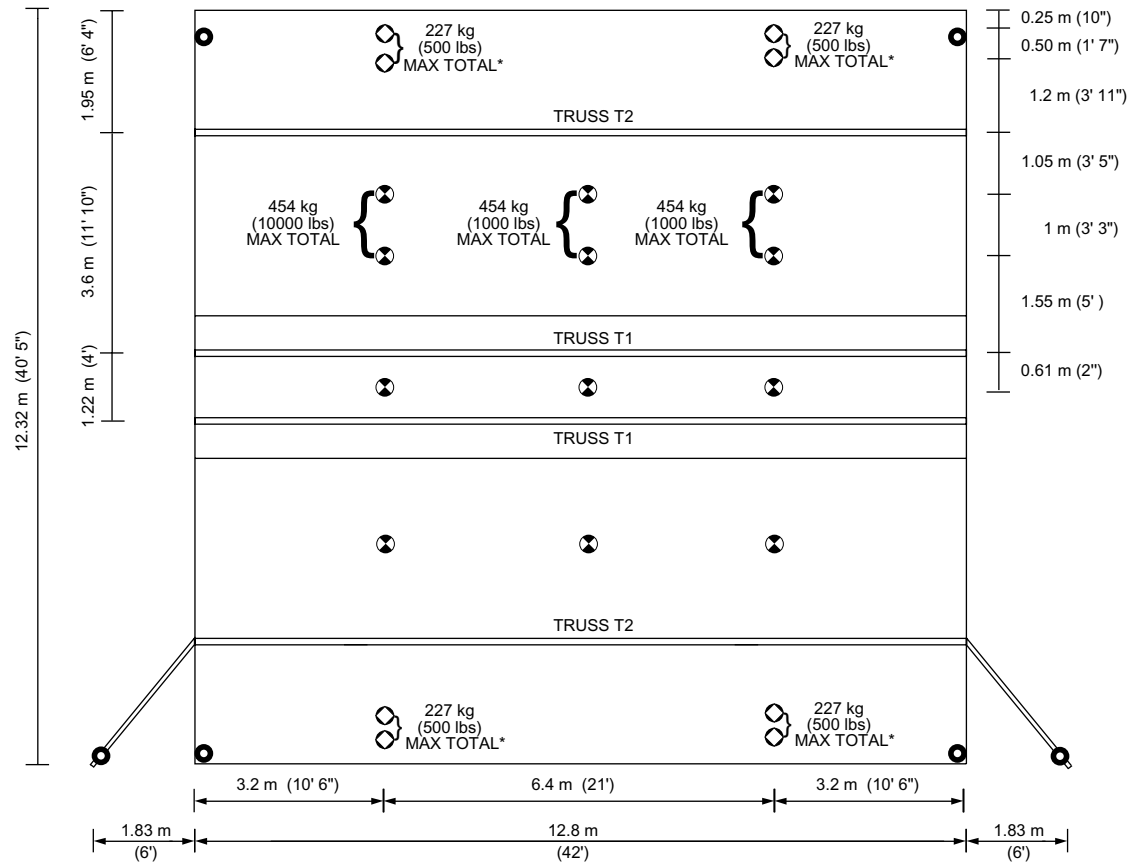
RIGGING PATTERNS

T1: USE P1 or P2 or P3 or P4 or P5
T2: USE P6 or P7 or P8 or P9

Maximum Load Bearing Capacity - 7247 kg (16000 lbs)

- ⊗ Rigging point maximum capacity: 454 kg (1000 lbs)
- Rigging point maximum capacity: 227 kg (500 lbs)*
- Rigging point maximum capacity: 908 kg (2000 lbs)

* Do not rig concurrently with loads on Truss T2 or when windwalls are installed.



DOWNSTAGE

Stage specifications subject to change without notice. Figures are within inch or cm to actual size.

© 1999 - All rights reserved Stageline Mobile Stage inc. Any and all forms of adaptation or reproduction of this document including plans and drawings found herein, in whole or in part, is strictly forbidden without the written authorisation of Stageline Mobile Stage inc.

Date: 2002-04-08
Ref no.: D09-V-324-A
Revision 1



700, Marsolais Street
L'Assomption, Quebec
Canada J5W 2G9
Tel: (450) 589-1063
or 1-800-267-8243
Fax: (450) 589-1711
www.stageline.com
info@stageline.com

Stageline SL 320 - Bi-directional Rigging System

LOAD BEARING TRUSSES

Maximum Load Bearing Capacity: 7247 kg (16000 lbs)

- ⊛ Rigging point maximum capacity: 454 kg (1000 lbs)
- Rigging point maximum capacity: 227 kg (500 lbs) *
- Rigging point maximum capacity: 908 kg (2000 lbs)
- ⊗ Rigging point maximum capacity: 1360 kg (3000 lbs)
when rigged concurrently with P12
or 1814 kg (4000 lbs) by itself

Rigging Patterns and Restrictions

T1: USE P1 or P2 or P3 or P4 or P5

T2: USE P6 or P7 or P8 or P9

Sound Wing

Use P10 or P11**

Use P10 and P12** or P11 and P12**

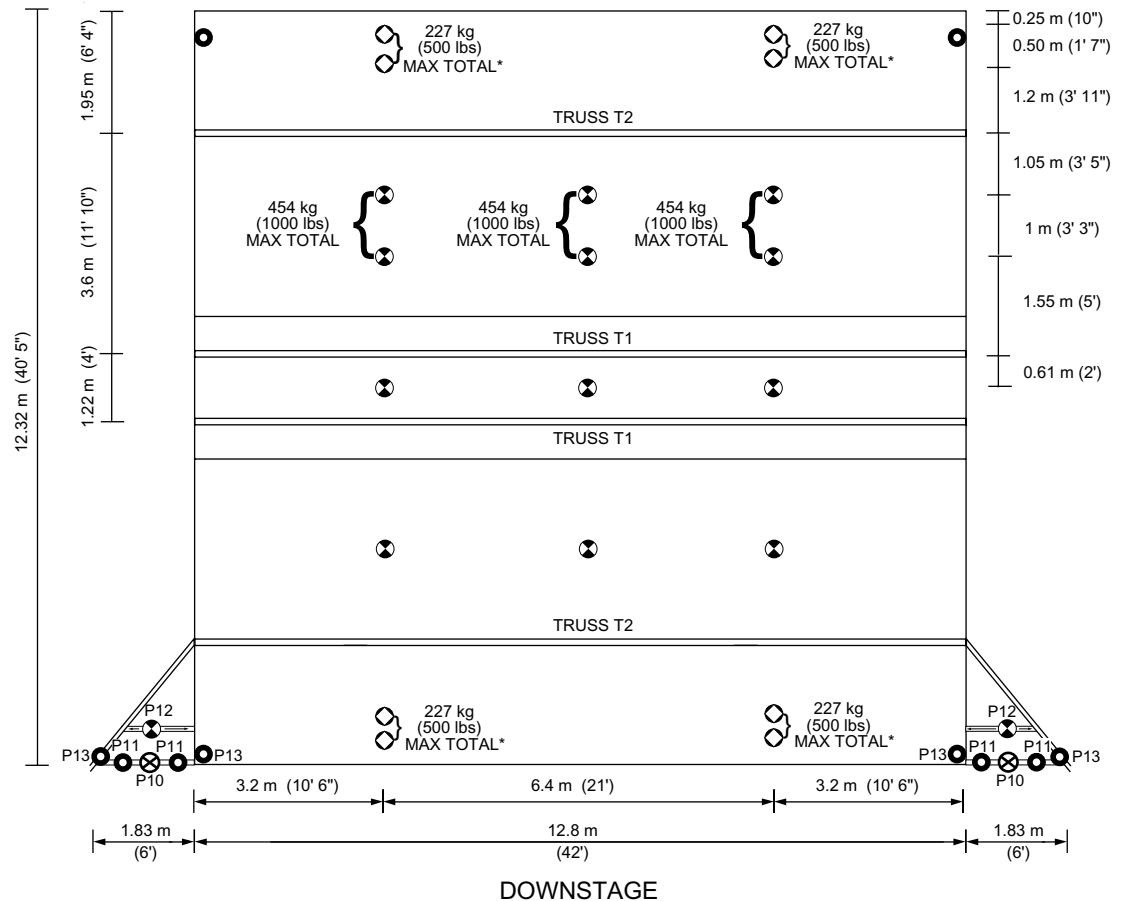
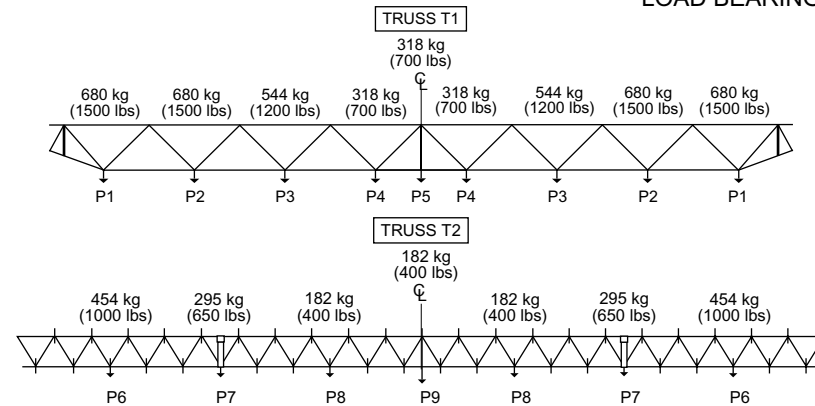
Note:

When banner rigging bar is installed,
the total of P10 to P13 must not exceed 1360 kg (3000 lbs).

Never use P13 concurrently with P10 to P12

* Do not rig concurrently with loads on T2 or
when wind walls are installed.

** Never exceed 1360 kg (3000 lbs) in total.

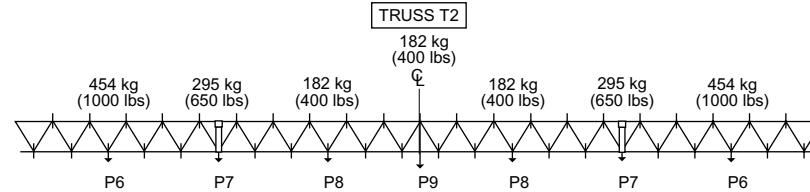
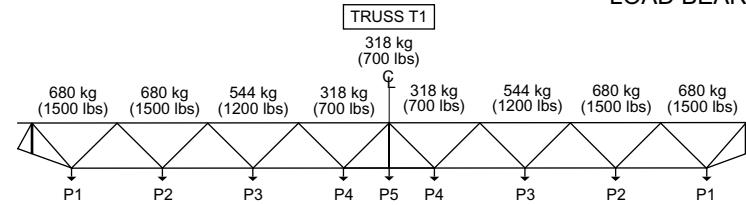




700, Marsolais Street
L'Assomption, Quebec
Canada J5W 2G9
Tel: (450) 589-1063
or 1-800-267-8243
Fax: (450) 589-1711
www.stageline.com
info@stageline.com

Stageline SL 320 - Reversible with Bi-directional Rigging System

LOAD BEARING TRUSSES



Maximum Load Bearing Capacity: 7247 kg (16000 lbs)

- ⊕ Rigging point maximum capacity: 454 kg (1000 lbs)
- Rigging point maximum capacity: 227 kg (500 lbs) *
- Rigging point maximum capacity: 908 kg (2000 lbs)
- ⊗ Rigging point maximum capacity: 1360 kg (3000 lbs)
when rigged concurrently with P12
or 1814 kg (4000 lbs) by itself

Rigging Patterns and Restrictions

T1: USE P1 or P2 or P3 or P4 or P5

T2: USE P6 or P7 or P8 or P9

Sound Wing

Use P10 or P11**

Use P10 and P12** or P11 and P12**

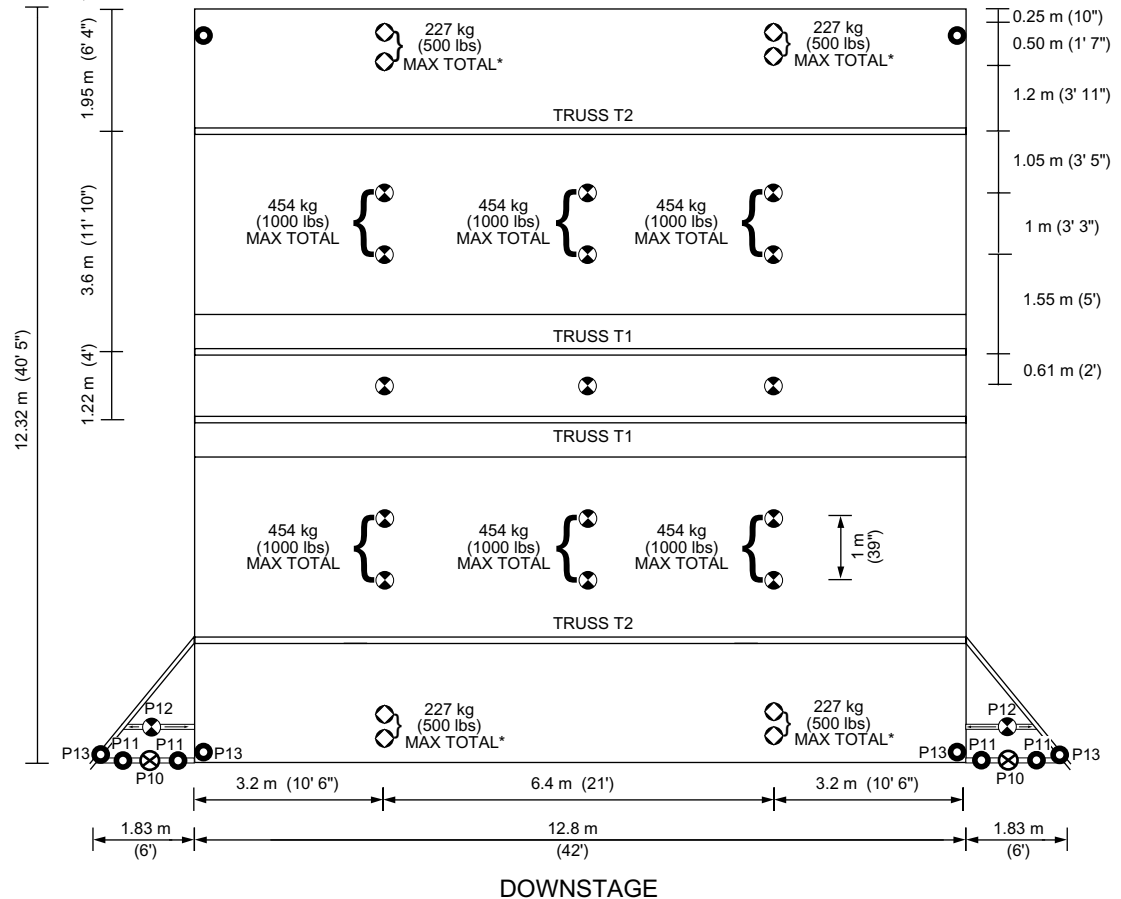
Note:

When banner rigging bar is installed, the total of P10 to P13 must not exceed 1360 kg (3000 lbs).

Never use P13 concurrently with P10 to P12

* Do not rig concurrently with loads on T2 or when wind walls are installed.

** Never exceed 1360 kg (3000 lbs) in total.

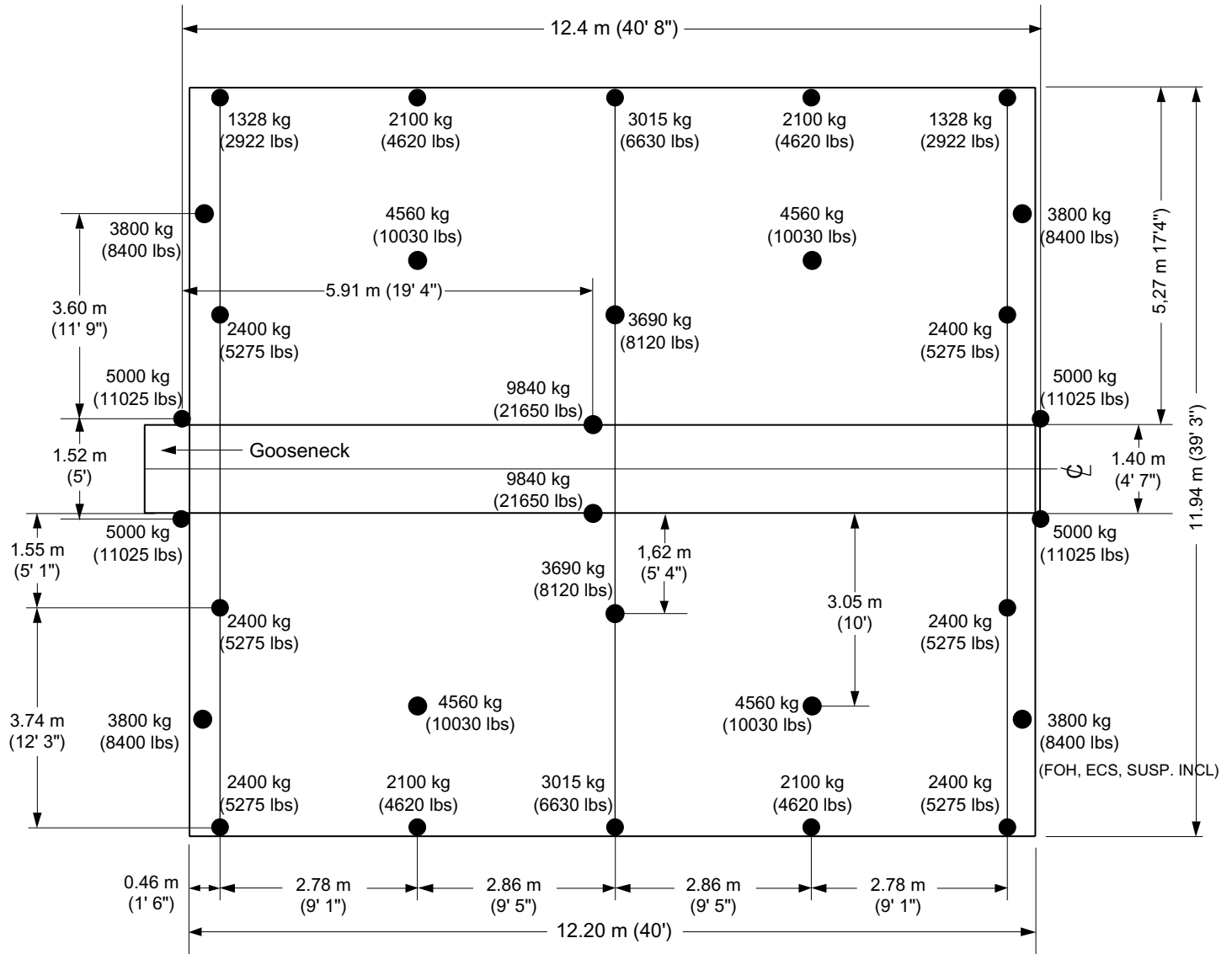


Stage specifications subject to change without notice. Figures are within inch or cm to actual size.



700 Marsolais Street
 L'Assomption, Quebec
 Canada J5W 2G9
 Tel: (450) 589-1063
 or 1-800-267-8243
 Fax: (450) 589-1711
 www.stageline.com
 info@stageline.com

Stageline SL 320



DOWNSTAGE

MAXIMUM GROUND SUPPORT CAPACITY

●: Floor stabilizers, aluminium extensions and solid steel levelling jacks.

*Nominal specifications subject to change without notice.